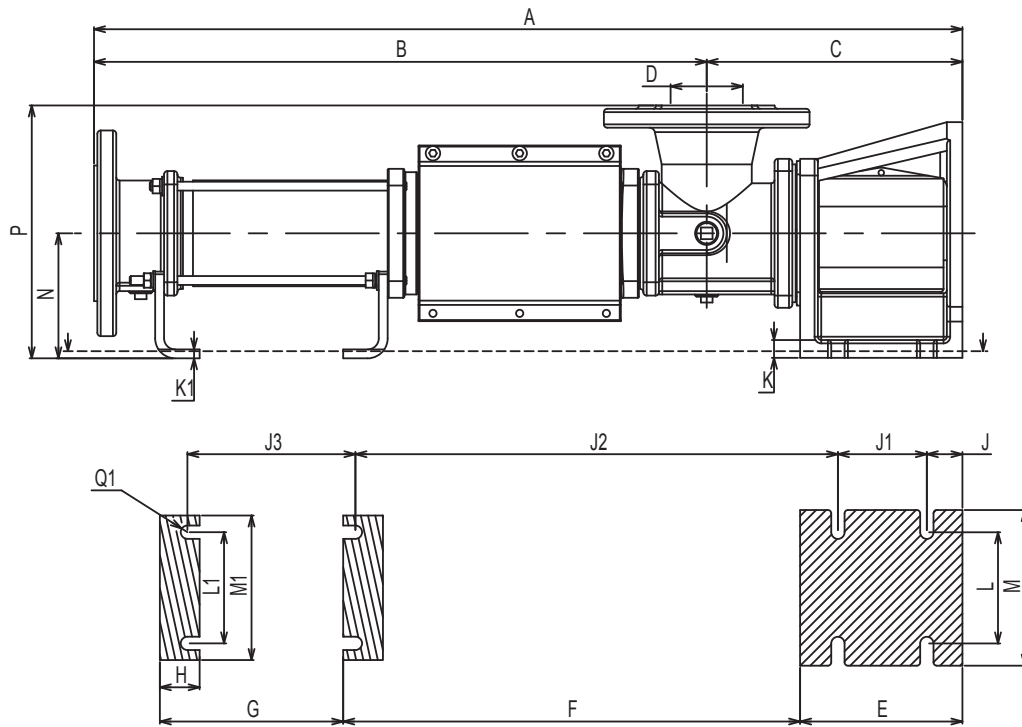


|                   |                |
|-------------------|----------------|
| <b>PUMP RANGE</b> | <b>COMPACT</b> |
| <b>MODEL</b>      | <b>ALL</b>     |
| <b>STATUS</b>     | <b>CURRENT</b> |

|                |                 |
|----------------|-----------------|
| <b>SECTION</b> | <b>5 - 2</b>    |
| <b>PAGE</b>    | <b>14</b>       |
| <b>DATE</b>    | <b>AUG 2019</b> |

**GENERAL ARRANGEMENT DRAWING EZ STRIP MODELS K BUILD**



|       |      |      |     |     |     |     |     |     |     |     |         |     |
|-------|------|------|-----|-----|-----|-----|-----|-----|-----|-----|---------|-----|
| MODEL | A    | B    | C   | D   | E   | F   | G   | H   | J   | J1  | J2      | J3  |
| Z34K  | 986  | 756  | 230 | 65  | 146 | 411 | 374 | 40  | 32  | 80  | 434     | 356 |
| Z35K  | 1102 | 882  | 220 | 80  | 146 | 411 | 488 | 40  | 32  | 80  | 434     | 470 |
| Z36K  | 1272 | 1036 | 236 | 100 | 152 | 325 | 571 | 60  | 38  | 73  | 511     | 551 |
| Z37K  | 1478 | 1198 | 280 | 125 | 178 | 530 | 708 | 50  | 44  | 86  | 563     | 688 |
| Z38K  | 1654 | 1374 | 280 | 125 | 178 | 630 | 783 | 50  | 44  | 86  | 663     | 763 |
| Z39K  | 1856 | 1541 | 315 | 150 | 195 | 719 | 852 | 70  | 47  | 96  | 746     | 832 |
| Z3AK  | 2007 | 1692 | 315 | 150 | 195 | 724 | 998 | 70  | 47  | 96  | 751     | 978 |
| MODEL | K    | K1   | L   | L1  | M   | M1  | N   | P   | Q   | Q1  | WT (kg) |     |
| Z34K  | 16   | 8    | 100 | 100 | 140 | 130 | 112 | 227 | M10 | M10 | 50      |     |
| Z35K  | 16   | 8    | 100 | 100 | 140 | 130 | 112 | 232 | M10 | M10 | 62      |     |
| Z36K  | 18   | 8    | 110 | 100 | 160 | 154 | 125 | 255 | M12 | M12 | 78      |     |
| Z37K  | 23   | 8    | 140 | 130 | 180 | 170 | 150 | 310 | M16 | M12 | 115     |     |
| Z38K  | 23   | 8    | 140 | 130 | 180 | 170 | 150 | 310 | M16 | M12 | 172     |     |
| Z39K  | 22   | 8    | 160 | 200 | 200 | 240 | 160 | 345 | M16 | M16 | 240     |     |
| Z3AK  | 22   | 8    | 160 | 200 | 200 | 240 | 160 | 345 | M16 | M16 | 296     |     |

All dimensions in mm

Note: Q and Q1 are bolt diameters  
Refer to section 5-2 page 1